

USA Flag with Snow Vision 1-31-26@2:35 PM Confirmation 3-1-26

(For the glory of Father God & Jesus Christ.)

***Major winter snowstorm and bomb cyclone hits America: January 31 to February 1 per CNN and other News reports with record snowfall.

***The Blizzard of 2026 from February 22-24 hits America in addition to other areas getting snowfall.

I was driving today. We had some traveling to do. While driving, I suddenly had a vision. I know Holy Ghost Spirit was helping me to drive. I have prayed and discerned it was from you, Jesus Christ, my love. I saw an American flag standing blown in the wind. This flag was tall, proud looking, no damage to it. Massive, very tall American flag. It was on a tall round metal pole. I could see behind it, land and buildings that had snow on them. The sky was bright blue and I was actually seeing different scenes. One scene was like gas stations. One scene was like mountains. Other scenes like an apartment area. It was towns, cities, just all over. That's all I know how to say as it appeared all over places, but there was snow. It looked like recent snow.

I saw an American flag standing blowing in the wind. You know how they blow. Sometimes they look regal and majestic as this flag blows. It was on a tall round metal pole. I could see behind it, land and buildings that had snow on them. The sky was bright blue. Now, it was like in the background and the flag was made to stand out for me to get my attention to be drawn to this massive flag. Then everything else was kind of in the background, but I could still see it. The wind picked up fiercely and the flag began blowing, flapping in the wind almost vehemently, just like, you know, real, real like hurricane weather taking a flag and beating it. Then suddenly the flag scene changed.

All I could see was about half of the American flag. It was now buried almost halfway in snow, layers of thick snow. It was not level, but somewhat diagonal where the snow covered much of the American flag, so none of it could move. The sky had turned an ominous gray now. Why diagonal? I'm not sure, but one thing that stood out was it wasn't the whole flag, but a little over half. That's a point that stuck out to me when I was seeing it. I prayed in Jesus Christ's Name, asking was this from Him? I discerned it, asked my question, and He replied, "Yes," and then said, "I'm about to bury America in snow." That's the one line He said, "I'm about to bury America-Babylon in snow."

This also discerned from my lovely Jesus Christ. What kind of snow? It was not specified. I did ask Him these questions, but I didn't get an answer. What kind of snow was not specified? Is it winter snow? Is it dirty snow related to nuclear weapons? Is it both? He did not say. This also was discerned by my son who prayed about it and other holy beings, holy people.

<https://weather.com/storms/winter/news/2026-01-27-east-coast-storm-noreaster-bomb-cyclone-snow-wind-forecast>

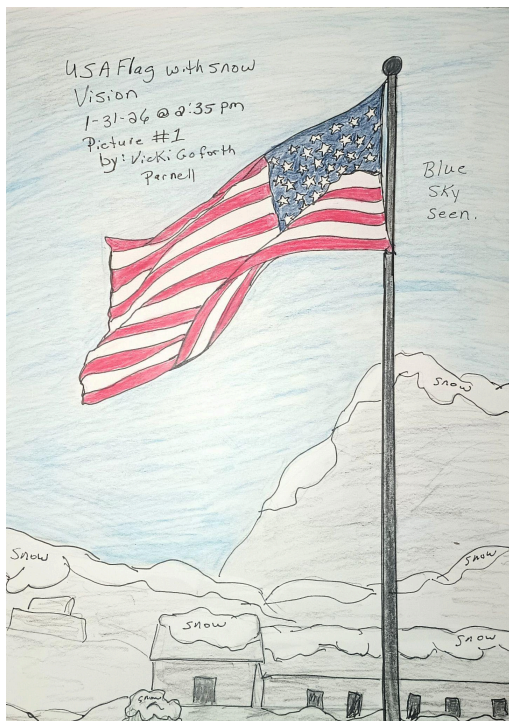
<https://www.cnn.com/weather/live-news/winter-storm-bomb-cyclone-snow-east-coast-01-31-26-climate>

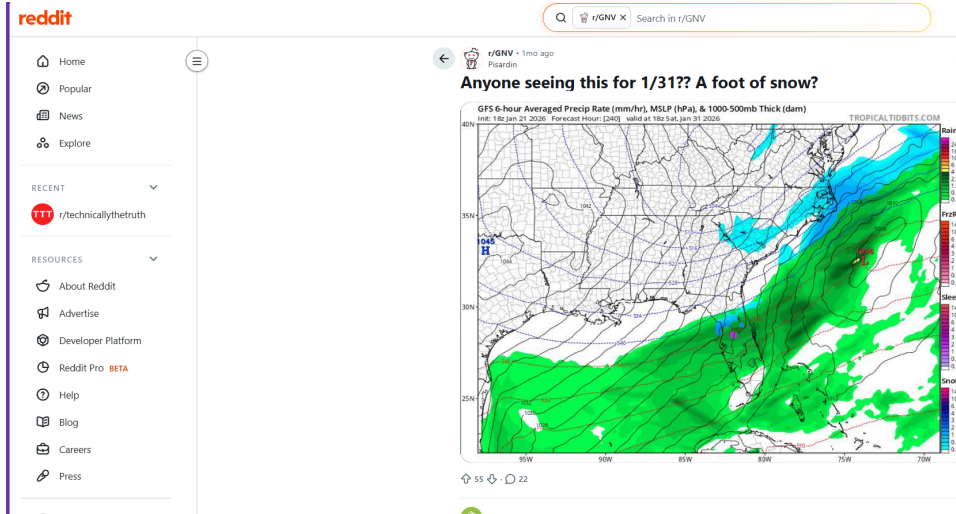
<https://www.youtube.com/watch?v=CzCW3vaG7gU&t=7s>

<https://www.cbsnews.com/boston/news/snow-totals-boston-massachusetts-february-23-2026/>

<https://giantswire.usatoday.com/story/weather/severe/2026/02/23/rhode-islands-2026-blizzard-breaks-1978-all-time-snow-record/88830431007/>

<https://www.traveltourister.com/news/blizzard-of-2026-winter-storm-hernando-final-snow-totals-records-broken-full-recap/>
<https://www.youtube.com/shorts/243s4a5jYtc>
<https://www.youtube.com/shorts/8LezTfCokFw>
https://www.youtube.com/shorts/5_AvA8z8nhE
<https://giantswire.usatoday.com/story/weather/2026/02/25/ri-weather-is-this-a-record-breaking-winter-for-snow-in-rhode-island/88857816007/>
<https://www.mensjournal.com/news/winter-storm-warnings-bring-new-snow-to-areas-hit-with-3-6-inches-of-snow-55-mph-winds>
<https://www.instagram.com/reel/DVKKw8eAOB1/>
<https://www.youtube.com/watch?v=IojP3r7O5fs>
<https://www.weather.gov/chs/Jan31-Feb01-2026WinterStorm>
<https://www.msn.com/en-us/weather/topstories/power-outages-travel-troubles-and-bitter-cold-plague-northeast-in-wake-of-historic-bomb-cyclone-blizzard/ar-AA1WWBal?ocid=BingNewsSerp>
<https://www.aol.com/news/february-2026-blizzard-totals-much-125439653.html>
<https://www.weather.gov/arx/feb2826#:~:text=Overview,this%20event%20to%20play%20out.>
<https://www.cnn.com/weather/live-news/winter-storm-bomb-cyclone-snow-east-coast-01-31-26-climate#:~:text=Storm%20snow%20totals%20climb%20over,to%20the%20county's%20latest%20update.>
<https://www.usatoday.com/story/weather/2026/02/27/new-york-city-snow-totals-winter-tracker/8896177007/>
<https://www.cnn.com/weather/live-news/winter-storm-forecast-snow-ice-01-24-26-climate>
<https://www.youtube.com/watch?v=bYFK9OCs-x4>
<https://www.youtube.com/watch?v=5eauRmaC6y8>





Here are some of the key snowfall totals recorded in the U.S. since January 31, 2026:

- **North Carolina:** Over 22 inches were recorded near Faust in the mountains, with up to 17.7 inches near the coast in Longwood. Carteret County saw 16 inches.
- **South Carolina:** Up to 12 inches was reported in Lake View.
- **Virginia:** 12.5 inches were recorded near Critz.
- **Georgia:** Up to 8 inches fell in the northeastern part of the state.
- **Mid-Atlantic/Northeast:** Subsequent to the late Jan/early Feb storm, a later February 2026 storm dumped up to 3

Other Seasonal Data (as of early March 2026):

- **Upper Midwest:** Snowfall totals in the Lake Michigan region have been varied, with Marquette, Michigan, recording over 208 inches for the season so far, and South Bend, Indiana, reporting 91.1 inches (34.1 inches above normal).
- **West:** As of the end of January, snow water equivalent (SWE) values were below average across the northern Cascades, Sierra Nevada range, and parts of the Rockies. [NOAA National C...](#) +1

Note: The results are based on reported data up to March 1, 2026, and represent specific intense storm events rather than a

Key Snowfall Highlights (Feb 1 - Mar 1, 2026):

- **Northeast Blizzard (Feb 22-24):** This major nor'easter brought some of the highest totals, with over 55 inches reported in Woonsocket, R.I., and 37.9 inches at T.F. Green International Airport in Rhode Island, breaking previous records.
- **Regional Totals (Feb Blizzard):**
 - **New Jersey:** Up to 30.7 inches.
 - **New York:** Up to 31 inches, with 19.7 inches in Central Park.
 - **Connecticut:** Up to 30.8 inches.
 - **Pennsylvania:** Up to 22.1 inches.
 - **Delaware:** Up to 21 inches.

- **Pennsylvania:** Up to 22.1 inches.
- **Delaware:** Up to 21 inches.
- **Midwest/Other Regions:** Marquette, Michigan, recorded a massive 208.3 inches for the season to date (as of March 1), which is 59.9 inches above normal. Significant late-season snow also fell in parts of Minnesota and Wisconsin on Feb 28.
- **Western US:** Late February saw 90 inches of snow in parts of California and 2 feet in the Rockies. [Wikipedia +6](#)

Current Snow Depth (As of Mar 1, 2026):

- National Snow Analyses indicate 18.2% of the US is currently covered by snow, with an average depth of 2.5 inches.

history.

- **New Jersey:** Widespread totals exceeding 2 feet, with some areas receiving up to 30.7 inches.
- **Connecticut & Massachusetts:** Reported widespread totals in the teens to over 2 feet, with 30.8 inches in North Stonington, CT, and over 30 inches in parts of MA.
- **Early Feb Storm (Feb 1):** A storm immediately following the end of Jan 31 dumped up to 22.5 inches in North Carolina, 12.5 inches in Virginia, and 12 inches in South Carolina. [FOX 5 DC +5](#)

Regional Highlights (As of late Feb 2026):

- **Northeast/Mid-Atlantic:** The Feb 22–

Texas experienced a significant winter storm in early February 2026, bringing snow, sleet, and ice across much of the state, with the heaviest impacts in North and Northeast Texas.



Storm Overview

The February 2026 winter storm was driven by an **Arctic cold front** that swept across Texas beginning Friday, February 2, 2026, with the worst conditions through Saturday, February 3. Temperatures plunged into the teens in North Texas, with wind chills near zero, while South Texas saw lows in the twenties. The storm brought a mix of **freezing rain, sleet, and snow**, particularly affecting areas not typically exposed to prolonged winter weather. Snow and ice accumulations were expected to reach up to **five inches in North Texas**, with hazardous road conditions and potential local power outages.

[Texas Today](#) +1

Affected Areas

- **North Texas:** Dallas, Fort Worth, and surrounding areas were projected to see the heaviest snow and ice, creating treacherous driving conditions. [1](#)
- **Northeast Texas:** Cities like Lufkin, Texarkana, Tyler, and Longview were in the "bulls-eye" for a mix of ice and sleet. [1](#)
- **Central Texas:** Austin and Waco experienced a combination of freezing rain and sleet, while Houston and San Antonio saw cold rain with brief icy periods. [1](#)
- **Panhandle:** Single-digit temperatures and near-zero wind chills were expected, with ice accumulation on roads and power lines. [1](#)

[2 Sources](#)

Impacts and Preparedness

Officials emphasized that while the storm was **less severe than Winter Storm Uri in 2021**, it still posed significant risks. Preparations included:

Flights Cancelled — The Complete Story of Winter Storm Hernando

Published on : 25 Feb 2026



DEFINITIVE RECAP | Published: February 25, 2026 | Storm Dates: February 22–24, 2026



Lastest News

- [Qatar Tourism After Missile Attack: Will Americans Cancel Trips After Feb 28 Shelter-In-Place?](#)
- [Qatar Doha Shelter-In-Place Feb 28: US Embassy Alert Issued Then Lifted After Israel-US Iran Strikes](#)
- [Iran Airspace Crisis: 43-Day UPDATE — Lufthansa Tehran Cancelled Until March 28, 7,015+ Dead, US-Iran Nuclear Talks Stall In Geneva, University Protests RESTART — What Every Traveller Needs To Know On February 28, 2026](#)
- [Italy ATC Strike March 7: ZERO EU261 Compensation — 1,000+ Flights At Risk During Paralympics — Complete Rebooking Guide](#)
- [Asia Flight Chaos February 28, 2026: 787 Delays + 35 Cancellations — Kuala Lumpur Worst Hit, Jakarta, Singapore, Bangkok, China All Crippled — Batik Air, AirAsia, Garuda Passengers Stranded](#)
- [Canada Day 59 Chaos: 533 Disruptions \(105 Cancellations, 488 Delays\) — Contract Expires](#)

Discuss On WhatsApp Chat

BOMB CYCLONE Devastates Southeast: 94 Dead, Historic Snow in Florida & Carolinas | Feb 2026

Raw Weather 698 subscribers

71 views Feb 1, 2026 #BombCyclone #WinterStorm2026 #SoutheastSnow #BombCyclone #WinterStorm2026 #SoutheastSnow #ExtremeWeather

BREAKING: A massive BOMB CYCLONE is devastating the American Southeast right now, killing at least 94 people and affecting 240 million Americans.

This video covers everything you need to know about the February 2026 bomb cyclone that has brought historic snow to Florida, the Carolinas, and Georgia - regions that rarely see winter weather this extreme.

8:48

FOX WEATHER

WEATHER NEWS

Published March 1, 2026 9:21am EST
Updated March 1, 2026 8:24pm EST

First of three storms spreads snow across Northern Tier, targets Midwest and Northeast with snow and ice

Winter Weather Alerts are in effect for parts of Nebraska, Missouri and Kansas as the first-round storm continues, having already exceeded some snow expectations across portions of the Northern Tier.

By Olivia Stephens
Source FOX Weather

Latest winter weather threat looming for the Midwest and...

NEWS

Winter Storm Warnings Bring New Snow to Areas Hit With 36 Inches of Snow, 55 mph Winds

Storm warnings and watches are in some areas of Midwest and Northeast from March 1 into the start of the week.

MAR 1, 2026 12:26 AM EST



BY ANNE ERICKSON News Writer, Men's Journal

0

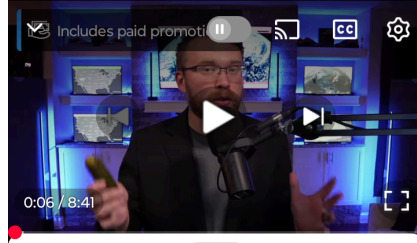


ADD US ON



Vehicles have difficulty driving on snow-covered roads as a massive snowstorm hits.

(Photo by Creative Touch Imaging Ltd./NurPhoto via Getty Images)



Description

This Blizzard Is Only The BEGINNING...

30K

Likes

636,314

Views

Feb 23

2026

For a limited time only, get 60% off your first order, plus free shipping, when you head to <https://Smalls.com/yall>.

ABOUT THIS VIDEO: A potent Nor'easter brings blizzard conditions and 1-2 feet of snow fro...more

How this was made



Curated by Copilot • 4h ago ago

Blizzard to slam five states with 70 mph winds

A powerful late-winter storm is set to hit Alaska, Minnesota, Montana, North Dakota, and Wisconsin with up to 10 inches of snow and winds reaching 70 mph. Forecasters warn of whiteout conditions, life-threatening wind chills, and severe travel disruptions. The storm could also impact infrastructure, agriculture, and power systems across the affected regions.

NATIONAL WEATHER SERVICE
NATIONAL OCEANIC AND ATMOSPHERIC ADMINISTRATION

HOME FORECAST PAST WEATHER SAFETY INFORMATION EDUCATION NEWS SEARCH ABOUT

Local forecast by City, ST or ZIP code
Enter location: Go

Location Help

News Headlines

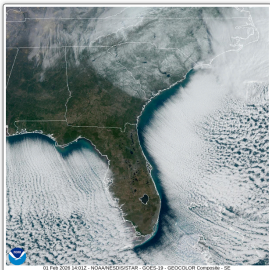

- NWS Charleston, SC Frost/Freeze Program Resumes March 1st
- NWS Charleston To Implement Minor Public Fire Weather and Marine Zone Changes on April 16, 2026

January 31 - February 1, 2026 Winter Storm Charleston, SC
Weather.gov > Charleston, SC > January 31 - February 1, 2026 Winter Storm

Current Hazards Current Conditions Radar Forecasts Rivers and Lakes Climate and Past Weather Local Programs

Overview

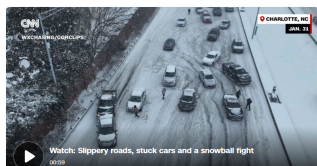
A pronounced low pressure system just off the coast of North Carolina produced widespread snow and breezy winds across much of the southeastern United States. Given the dry airmass in place, snowfall ratios across our area averaged around 15:1 or higher, resulting in dry (fluffy snow), which is quite uncommon for locations this far south. Arctic air behind the system also brought record breaking cold temperatures and wind chills to the region.


@DhindsavlogsUSA 2/26/2026 #snowfall #snow #newyorkcity ...

February 1, 2026 — Bomb cyclone drops historic amounts of snow on Southeast as snowflakes fly in Florida freeze

Updated 12:13 PM EST, Sun February 1, 2026



Watch: Slippery roads, stuck cars and a snowball fight

SPONSORED CONTENT
2026 Honda Prelude First Drive Review: The Ideal Entry...
To see this video on YouTube, click here.

Bomb cyclone drops historic amounts of snow on Southeast as snowflakes fly in Florida freeze

The bomb cyclone that struck the Southeast on February 1, 2026, brought historic amounts of snow and caused significant disruptions across the region. The storm, which was officially classified as a bomb cyclone, dropped up to 12–24 inches of snow in the Carolinas, leading to near-blizzard conditions and coastal flooding. The storm also impacted Canada and moved east into the northern Atlantic Ocean, dissipating on February 4, 2026. North Carolina and Georgia declared states of emergencies, while Virginia and South Carolina extended their states of emergencies from the previous storm. The storm caused over 10,000 power outages across North Carolina, leaving many residents without access to essential services. The Governor of North Carolina urged residents to stay at home for safety reasons.

[Wikipedia](#) +4

Wikipedia

January 30 – February 2, 2026
North American bomb cyclone

todaynews.blog

February 1, 2026 – Bomb cyclone drops historic...

RT

View all

News about February 1, 2026 – Bomb Cyclone Drops Historic Amo... >

CNN · 5d · on MSN

Power outages, travel troubles and bitter cold plague Northeast in wake of historic bomb cyclone blizzard

Thousands in the Northeast remained without power amid freezing temperatures Tuesday morning as people from that region and the mid-Atlantic dug out from extreme snowfall -- ...

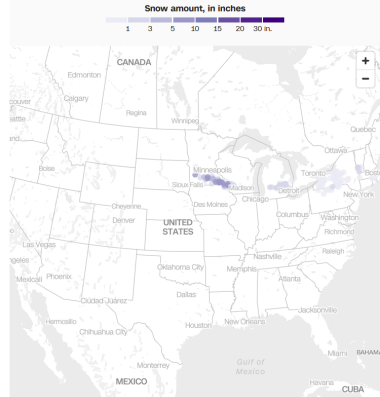
9:18 a.m. CST, February 1, 2026

Storm snow totals climb over 20 inches

By Meteorologist Chris Dolce

Tracking snowfall across the US

The latest snowfall reports sent to the National Weather Service in the last 24 hours.



msn

Blizzard to slam five states with 70 mph winds

A powerful late winter storm is set to hit Alaska, Minnesota, Montana, North Dakota, and Wisconsin with up to 10 inches of snow and winds reaching 70 mph. Forecasters warn of whiteout conditions, life-threatening wind chills, and severe travel disruptions. The storm could also impact infrastructure, agriculture, and power systems across the affected regions.

Five states brace for peak blizzard

Alaska's coastal communities face severe disruption. Northern Plains and Midwest under heavy snow threat. Storms hit on infrastructure and agriculture.

Five states brace for peak blizzard

A potent late-season system is forecast to deliver up to 10 inches of snow and 70 mph winds to Alaska, Minnesota, Montana, North Dakota, and Wisconsin. The National Weather Service warns of blizzard-style travel hazards, sustained power outages, and dangerous wind chills. Alaska's Eastern Aleutians, including Unalaska and Adak, are expected to see some of the most intense conditions.

9:26 PM 5/1/2026



Search "snow blower"

@GTDwithMatt Subscribe

What a Beast! Blizzard is no problem for the Honda ...

Blizzard 2026 Rhode Island - Going through 32" Snow!

446

68

Share

Remix

Description

Blizzard 2026 Rhode Island - Going through 32" Snow!

446	32,642	Feb 23
Likes	Views	2026

Blizzard 2026 Rhode Island. Just started clearing snow now that it's letting up a bit. The Honda snow blower is doing a great job getting through 32 inches of snow! The low areas are about 26 inches, the higher areas are at 32 inches and we have some drifts that are around 3+ feet. Lots of cleanup ahead! #blizzard #snow #snowremoval equipment

Subscribe for more videos!
Like and share if you enjoyed this video!

In **February 2026**, a historic blizzard known as **Winter Storm Hernando** impacted the Northeastern United States, causing **2–3 feet (24–36 inches)** of snow across much of the region. This storm set records for snowfall in several locations, including **Rhode Island**, where **37.9 inches** of snow were recorded at T.F. Green International Airport, surpassing the previous record of **38 inches** set during the Blizzard of '78. The blizzard also led to significant travel disruptions and emergency declarations in multiple states, including New York and New Jersey. [Wikipedia](#) **+2**

Wikipedia
February 2026 North American blizzard - Wikipedia

The Weather Channel
Blizzard Of 2026 An All-Time Record Snowstorm In...

View all

News about Feb 2026 Record Snow >



GIANTSWIRE • 5d
Providence nears all-time winter snow record with more flurries ahead

SEVERE
Blizzard of 2026 shatters Rhode Island's snow record from 1978

By **Patrick Anderson**
 Providence Journal
 Feb. 23, 2026 | Updated Feb. 24, 2026, 3:29 p.m. ET

Advertisement
 Microsoft Azure
Tab chaos isn't in your job description
 Integrate your tools into one stack with Azure.

AOL
 Search

February 2026 blizzard totals: How much did it snow across the Northeast US?

TYLER THRASHER
 Tue, February 24, 2026 at 9:54 AM CST

The Brief

- A powerful winter storm delivered widespread heavy snow across the Northeast, with some communities topping 2 feet.
- The highest totals were reported in parts of New Jersey, New York and Connecticut, with major impacts also in Pennsylvania and Delaware.
- Snow totals in the DC region were lower overall, but some Maryland and Virginia communities still saw several inches.

NEW YORK - A major nor'easter that intensified offshore brought **heavy snow and strong winds** across a wide stretch of the Northeast, leaving a broad range of storm totals from Virginia and the DC region to New York, New Jersey and Connecticut.

RELATED: [More snow to hit NYC area after record blizzard: See latest forecast for Tuesday](#)

Latest Local News Live Shows CBS NEWS

Boston News Weather Sports Video WBZ Features

Local News
Snow totals in Boston and across Massachusetts from Blizzard of February 23, 2026

By **Mike Toole**
 Updated on: February 24, 2026 / 11:44 AM EST / CBS Boston

Add CBS News on Google

The **Blizzard of 2026** left more than three feet of snow in parts of Massachusetts Monday and caused widespread **power outages**. Southeastern Massachusetts was hit the hardest. Snow was falling there at a rate of four inches per hour at one point during the storm. Nearby Providence, Rhode Island set a new all-time record with 37.9 inches of snow. That beat the previous mark of 28.6 inches set during the historic **Blizzard of 1978**. Boston had 17.1 inches, according to the National Weather Service's

NATIONAL WEATHER SERVICE
 NATIONAL OCEANIC AND ATMOSPHERIC ADMINISTRATION

HOME FORECAST PAST WEATHER SAFETY INFORMATION EDUCATION NEWS SEARCH ABOUT

Local forecast by "City, ST" or ZIP code
 Enter location [Go]
[Location Help](#)

News Headlines

- NWS La Crosse VIRTUAL Spotter Training Schedule
- 2026 Spring Flood Outlook
- Changes to Flood Stage Categories for Upper Iowa River at Bluffton (BLFM), Effective 4/1/26
- Feb 28th Narrow Band of Heavy Snow Event Summary

[Additional Headlines](#)

Narrow Band of Heavy Snow on Saturday, February 28th
 Weather.gov > La Crosse, WI > Narrow Band of Heavy Snow on Saturday, February 28th

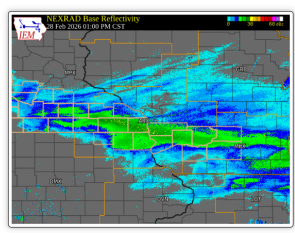
La Crosse, WI
 Weather Forecast Office

Current Hazards Current Conditions Radar Forecasts Rivers and Lakes Climate and Past Weather Local Programs

Overview

An extremely narrow band of intense snow fell across southeast Minnesota and southwestern Wisconsin, clipping far northeast Iowa, during the day on Sat, February 28, 2026. The highest reports ranged from 6" to 10" in a narrow 20-mile swath that started back in far eastern South Dakota and spanned southern Minnesota before weakening in south-central Wisconsin. While snow amounts were quite impressive, even more impressive was the fluffy nature of the snow with snow liquid ratios (what 1" of water would translate to in snow depth) of 30-50:1! Our average SLR is usually between 10-15:1.

The narrow nature of the snow band, coupled with an environment that teetered on being too dry, made for an exceptionally challenging forecast. Confidence was high many days in advance that we would see a narrow band of intense snow rates (1-2"/hr), but even the night before, the lingering question was: exactly where and for how long? A difference of even a few hours and a few miles could mean the difference between a dusting of snow and 6+ inches. In the case of this event, the stars aligned perfectly for this event to play out.



Radar Animation from 4am-4pm CST on Feb 28, 2026

February 1, 2026 — Bomb cyclone drops historic amounts of snow on Southeast as snowflakes fly in Florida freeze

Updated 12:13 PM EST, Sun February 1, 2026



- 19
- Dislike
- 3
- Share
- Remix

@AComicBookworm [Subscribe](#)
Forest Hill, New York on February 23, 2026, Beautiful ...

Description

Forest Hill, New York on February 23, 2026, Beautiful Snow Day

19 Likes	323 Views	6h Ago
--------------------	---------------------	------------------

Walk through snow, even New York City has moment where street is cleared of traffic ...

Video

Explore

[Upgrade to Premium](#)

Severe Weather

Health & Wellness

Lifestyle

Winter Storm

Winter Storm Gianna Brought Heavy Snow, Winds, Coastal Flooding And Bitter Cold To South, East (RECAP)

On the heels of Winter Storm Fern, a strong bomb cyclone traveled up the East Coast, bringing big impacts and dangerous travel conditions.

By [Rob Shackelford](#), [Jonathan Erdman](#) and [Tiffany Savona](#) • February 2, 2026

[View all 113 comments](#) [Share](#)

NOAA NWS Weather Prediction Center's Post

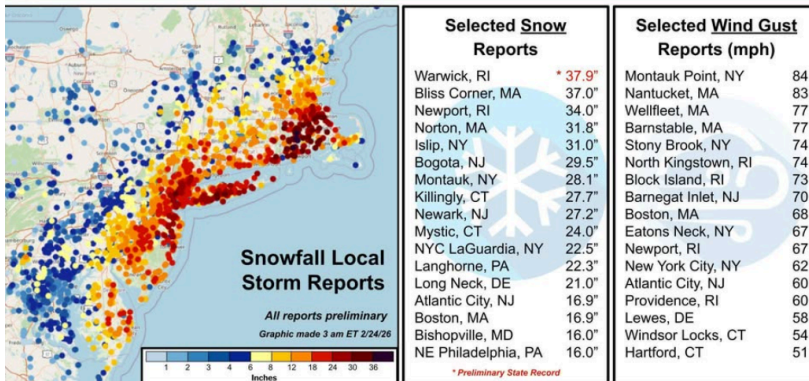


NOAA NWS Weather Prediction Center

February 24 at 2:42 AM

The major nor'easter that impacted the Mid-Atlantic and Northeast is coming to an end, and here are updated storm reports from the past two days. As of 3 AM EST, the highest snowfall amount was reported at Rhode Island T.F. Green International Airport (Warwick), with a total of 37.9 inches, which would be the state record if verified.

Late February Major Nor'easter - Heavy Snow & Wind Reports



Issued: 2/24/26 3:12 AM EST

For more information go to: www.wrc.ncep.noaa.gov and www.weather.gov

Weather Prediction Center
College Park, MD

1.6K

50 comments 576 shares

Like

Comment

Share

Instagram

Log In Sign Up

weatherchannel • Follow

Original audio

weatherchannel • 5d
Rhode Island saw over 30+ inches from Winter Storm Hernando. ❄️

taylor dad_318 5d
Jobs be like you still coming?
Like Reply
View all 122 replies

spyderweb13 5d
Now they know what my dad had to do to get to school, Every Day!!
Like Reply
View all 74 replies

somegirlrex_3d
Not the blizzard making everyone find

95.6K 3.3K

5 days ago

Log in to like or comment.

More posts from weatherchannel